

CivKura



# CIVKURA

CAPABILITY STATEMENT 2025FY

# COMPANY OVERVIEW



CivKura is a majority Indigenous-owned company that specialises in equipment rental, labour provision, mill reliness, shutdown services, and construction services. Leveraging decades of collective experience, we are dedicated to advancing innovation in infrastructure while upholding Indigenous values. Our distinctiveness lies in our unwavering commitment to excellence and community, ensuring the delivery of dependable and sustainable solutions.

Boasting a distinguished heritage, our company is proudly led and managed by Aboriginal Director Kelly Burke.

The organisation is passionately dedicated to providing cutting-edge solutions in construction, civil engineering, and mining, featuring state-of-the-art equipment and shutdown services across all sectors. We ensure direct supply throughout Australia and actively participate in innovative initiatives upon request.

# ABOUT US

A pivotal strength of CivKura lies in the extensive experience of its director, Kelly, who boasts over 25 years of expertise in construction, civil engineering, and mining, covering a spectrum of construction, civil works, and mining commodities. Beyond offering specialized consulting services geared towards production and safety enhancements, CivKura is dedicated to providing inventive solutions aimed at helping your company boost its bottom line through improved safety and cost efficiency.



Our organisation is dedicated to fostering the development of indigenous perspectives, abilities, and voices. For enquiries or to express interest in collaborating, please feel at liberty to reach out to the Director via the phone number provided.



CivKura transcends its corporate identity and represents a pursuit of excellence, innovation, empowerment, and safety.

# OUR TUNNELLING CAPABILITIES



We offer a comprehensive suite of tunnelling services designed to meet the diverse and dynamic needs of our clients across various sectors, including underground mining, infrastructure development, and utility installations.

Our extensive capabilities are backed by advanced technology, skilled personnel, and an unwavering commitment to safety, efficiency, and high-quality execution. We specialise in both traditional and specialised tunnelling methods, ensuring that every project is delivered with precision, reliability, and minimal disruption.

## Key Tunnelling Services:

- Raise Boring
- Ventilation Systems
- Pumping Solutions
- Tunnelling for Infrastructure & Mining
- Underground Development & Production
- Drill and Blast

# OUR VALUES

## Quality

We provide top-tier construction solutions, ensuring every project is built to last and meets the highest industry standards.



## Reliability

We deliver reliable equipment and services that our clients can trust, ensuring construction projects stay on schedule without unexpected delays.

## Efficiency

We focus on streamlining processes and maximising resources to complete projects on time and within budget, driving efficiency at every stage.



## Community

We build a strong community by maintaining the highest level of professionalism, ensuring respect and collaboration in every partnership.

## Communication

Effective communication is crucial in construction, and we maintain open, transparent lines with our clients and teams to ensure smooth project execution from start to finish.



# SUPPLY NATION CERTIFICATION



CivKura is proud to be a certified Indigenous business through Supply Nation, Australia's leading database of certified Aboriginal and Torres Strait Islander businesses. This certification affirms our commitment to supporting Indigenous communities by ensuring our business is owned and controlled by Indigenous Australians.

Our Supply Nation certification not only strengthens our identity but also provides our clients with confidence in partnering with an organization that values cultural heritage, sustainability, and ethical business practices.

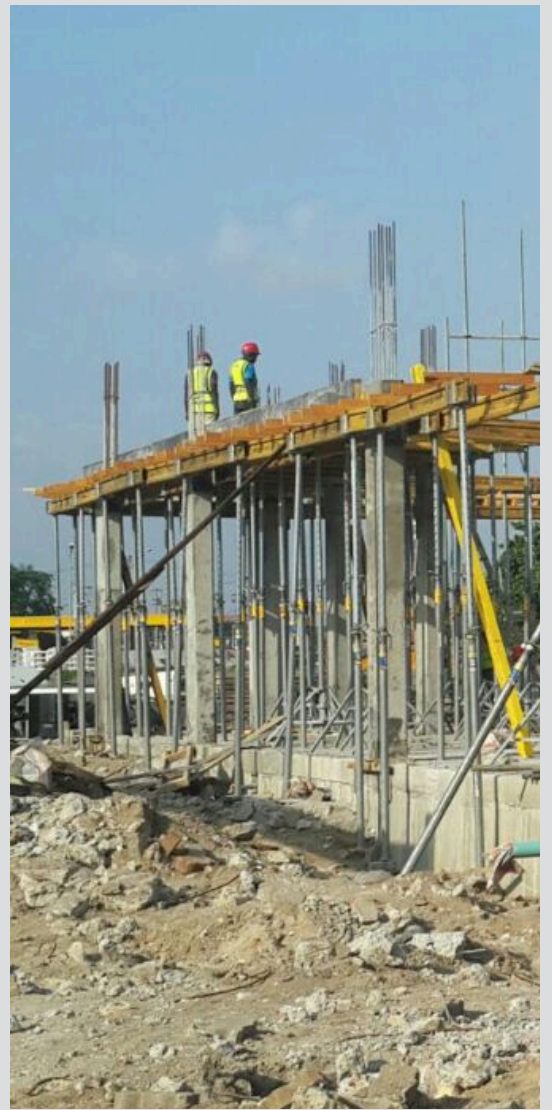


# PURPOSE & VISION

## EMPOWERING INNOVATION AND INDIGENOUS VISION

Our ethos is founded upon the principle of innovation. CivKura is widely recognised for its commitment to innovation and transformation in sectors that impact all aspects of society. With forty years of experience and the most up-to-date, functional civil and mining equipment available, we view obstacles as chances to generate lasting value for our partners, clients, and communities.

We venerate our heritage and respect our legacy as a 100 percent Aboriginal-owned business by empowering indigenous voices, visions, and abilities. CivKura is dedicated to promoting sustainable development, supporting economic expansion, and cultivating a future that upholds cultural integrity and environmentally responsible advancement.



# COMMITMENT TO COMMUNITY



In order to make a societal impact, CivKura looks to actively provides sponsorship to indigenous organisations and events at the local level. This form of corporate social responsibility (CSR) is committed to nurturing positive relationships with the local community and promoting social and environmental sustainability.

CivKura exhibits its dedication to Indigenous communities and culture by means of an extensive array of strategic initiatives. The activities mentioned above include supporting community development and Indigenous cultural preservation initiatives, providing sponsorship for Indigenous events, cultivating collaborations with Indigenous organisations, promoting employee engagement in volunteer work, implementing hiring practices that give priority to Indigenous interests, and adopting sustainable business strategies. These initiatives exemplify a commitment to ethical and responsible business practices while also contributing to the conservation of the culture and welfare of Indigenous communities.



# OUR SERVICES



**Plant and Machine  
Hire**



**Management  
Services**



**Delivering Construction  
Services**



**Mining and Civil  
Services**



**Labour  
Hire**



**Consultancy  
Services**



**Civil and Mining  
Equipment Hire (Wet & Dry)**

# Why Choose CivKura?

- **Indigenous Workforce Commitment**

Over 50% of our workforce comprises Indigenous employees. We are dedicated to increasing Indigenous representation within the workforce, providing job opportunities and career pathways that make a real difference in communities

- **ISO-Certified Quality and Safety**

We are in the process of achieving ISO certifications, which will validate our commitment to maintaining the highest quality, safety, and environmental standards. This ensures peace of mind for clients who value adherence to industry best practices.

- **Flexible, Client-Centric Approach**

CivKura prides itself on its adaptability and commitment to clients. We offer tailored solutions that align with the specific needs of each project, whether it's customising recruitment plans or delivering equipment hire solutions that fit unique project timelines.

- **Community-Focused Impact**

We don't just work in communities; we're invested in their long-term success. By creating training, development, and employment opportunities, we contribute to sustainable growth within Indigenous communities, allowing our clients to engage meaningfully in social responsibility.

# RECENT PROJECTS



## **CLIENT NAME:**

CMC Group (Civil Mining & Construction)

## **SCOPE OF WORK:**

CivKura supplied wet and dry hire services for CMC Group, including graders, rollers, and water trucks.

## **PROJECT FOCUS:**

The equipment was used in various civil construction projects, which required a versatile fleet of machinery for tasks such as road grading, compaction, and dust control on large-scale construction sites.

## **OUTCOME:**

The wet hire option provided CMC with fully serviced and operational equipment, while the dry hire allowed for flexibility in machinery management, contributing to smooth and efficient project delivery.

# RECENT PROJECTS



## **CLIENT NAME:**

Premier Constructions Australia

## **SCOPE OF WORK:**

CivKura delivered both wet and dry hire services, providing telehandlers and white-collar labor hire for Premier Construction's building and infrastructure projects.

## **PROJECT FOCUS:**

The telehandlers were used for material handling, lifting, and placing heavy loads in construction sites, while the labor hire provided skilled white-collar professionals to support project management, site supervision, and administrative functions.

## **OUTCOME:**

The provision of telehandlers ensured that materials were efficiently handled on site, and the labor hire ensured smooth project management, helping Premier Construction maintain productivity and meet project deadlines.

# RECENT PROJECTS

**CLIENT NAME:**

Serra Drilling Pty Ltd

**SCOPE OF WORK:**

CivKura provided dry hire of backhoes for Serra Drilling's operations in North West Queensland.

**PROJECT FOCUS:**

The backhoes were used for a variety of drilling and site preparation tasks, helping to support drilling teams by providing reliable and well-maintained machinery for their operations.

**OUTCOME:**

CivKura's equipment contributed to maintaining project timelines by ensuring the machinery was available and in optimal working condition.



# Client Testimonial

“Throughout our collaboration, CivKura Pty Ltd consistently demonstrated a high level of professionalism, reliability, and efficiency. Their equipment was delivered on time and in excellent condition, meeting all of our operational requirements. The backhoes provided were well-maintained, and their team ensured that any logistical challenges were addressed promptly.

In addition to their equipment hire services, CivKura’s commitment to maintaining open lines of communication was invaluable. They were proactive in responding to any concerns and flexible in accommodating our changing needs as the projects evolved. This level of service contributed significantly to the successful completion of our campaigns.

We are especially impressed by CivKura’s dedication to supporting Indigenous employment and development, which aligns with our own values of fostering inclusive business practices. Their ability to combine strong service delivery with a commitment to community engagement makes them a standout partner in our industry.

Based on our experience, I have no hesitation in recommending CivKura Pty Ltd for any similar services, and we look forward to continuing our working relationship with them.”

*Serra Drilling Pty Ltd*



# KELLY BURKE

## Managing Director

Kelly Burke is a seasoned professional with a dynamic career spanning over two decades in the mining, construction, and civil industries. Currently serving as the Managing Director of CivKura Pty Ltd, an Indigenous-owned enterprise specialising in construction, mining, civil, and labour hire, Kelly combines hands-on expertise with a visionary approach to business and workforce development. His exceptional leadership, technical knowledge, and commitment to safe, efficient, and innovative operations make him an invaluable asset to any organisation.

Kelly's career reflects a steady progression of leadership roles with some of the world's leading resource companies, including Glencore and Rio Tinto. As Operations Lead and Site Senior Executive for Glencore, he managed the feasibility and operational planning of the Aurukun Bauxite Project, a Life of Mine initiative spanning 23 years. Kelly's strategic oversight included workforce modelling, procurement, operational readiness, and the implementation of sustainable practices such as bushfire management and site maintenance.

In his tenure with Rio Tinto, Kelly excelled in managing large-scale mining operations, leading teams of up to 248 employees and contractors. As Amrun Process and Export Superintendent, he managed the processing and export of 22.8 million dry tonnes of bauxite annually, driving safety, production efficiency, and cost optimisation. Kelly consistently exceeded operational targets, developed transformative solutions valued at over \$8 million, and provided relief mine management, showcasing his versatility and expertise.

# Why Kelly Burke?

Kelly Burke is more than a leader; he is a catalyst for growth and innovation. With a rare blend of operational expertise, business acumen, and a passion for empowering communities, Kelly delivers exceptional results in complex and demanding environments. His experience managing multimillion-dollar projects, coupled with his dedication to safety and sustainability, ensures he can drive strategic initiatives while building collaborative, high-performing teams.

By leveraging his vast experience and leadership skills, Kelly aims to contribute to organisations seeking to achieve operational excellence, innovative solutions, and meaningful community impact. His vision aligns seamlessly with companies committed to sustainable practices, diversity, and long-term growth. Kelly Burke is ready to bring his expertise, passion, and proven track record to your team. With his ability to lead from the front and a commitment to achieving best practices, he is the professional you need to drive success in your projects and operations.

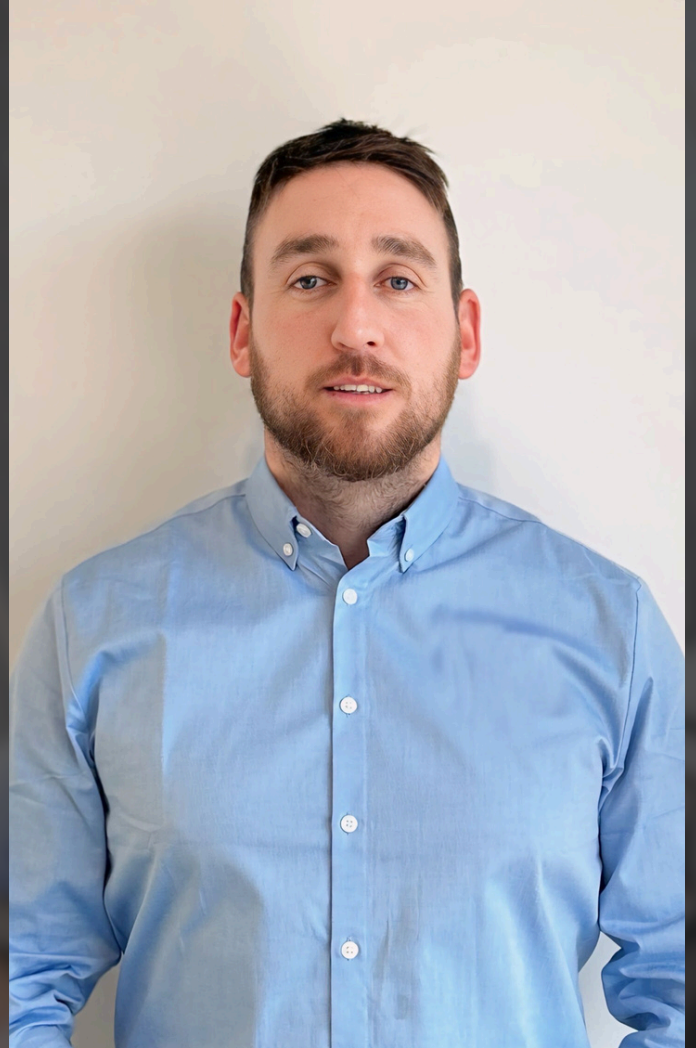


# SEAMUS MCHUGH

## Director

As the Director of CivKura Pty Ltd, Seamus McHugh brings almost a decade of expertise in managing and executing high-profile construction projects. Seamus' extensive background in the construction industry enables him to oversee complex commercial and industrial developments with precision and efficiency.

Seamus is an entrepreneur by nature, and has a vision to combine technology and construction to create a safer and sustainable legacy for the next generation of construction professionals.



Joining CivKura's team has been a great impact on our company especially in implementing collaborative ideas and initiatives. Seamus ensures that we maintain our high standards of quality and sustainability. We are confident that his leadership and vision will significantly contribute to our continued success.

"I try to lead by example, and foster an open-door policy to my whole team. Why? To make sure the business decisions I make, positively influence the day-to-day company operations.

Leading with a people-first mindset hasn't failed me yet, and the people within the team are why we are the construction partner it is today..."

- SEAMUS MCHUGH



# CONTACT US

---

LET'S WORK TOGETHER.

## HEAD OFFICE (SA)

24 Nixon Road, Wingfield SA 5013

## QLD OFFICES

Marblewood Circuit, Mt Low Qld.

4818

34 Greenvale Street, Yubulu Qld 4818

## PERTH OFFICE

7 Windward Loop, Ocean Reef WA

6027

## EMAIL

[kelly@civkura.com.au](mailto:kelly@civkura.com.au)

[seamus@civkura.com.au](mailto:seamus@civkura.com.au)

## PHONE

+61 457 593 932

+61 420 270 515

## WEBSITE

<https://www.civkura.com/>

